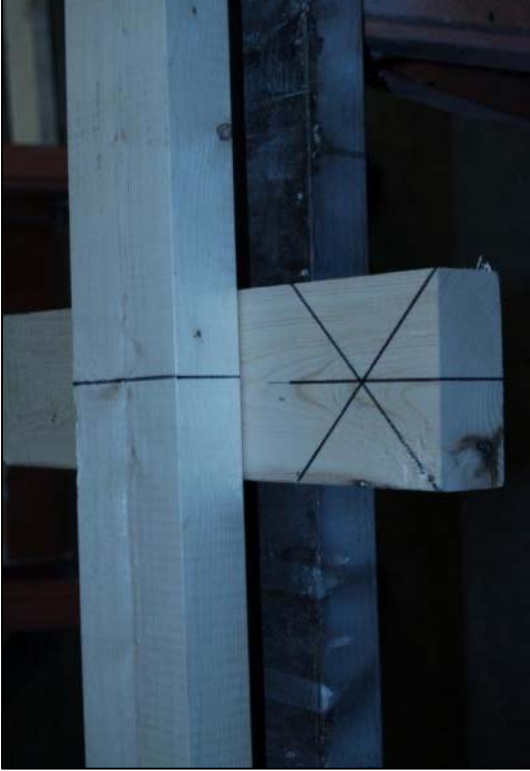


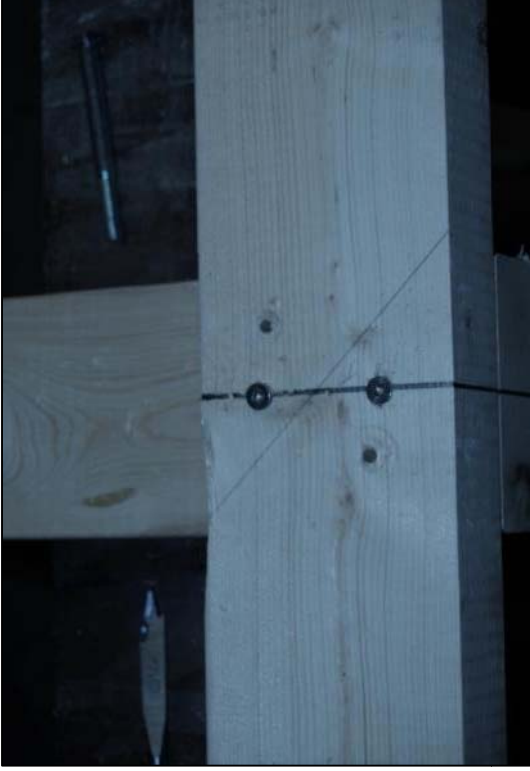
Cubmobile 2011

Build Photos

**These may provide further or better
explanation of the drawings**



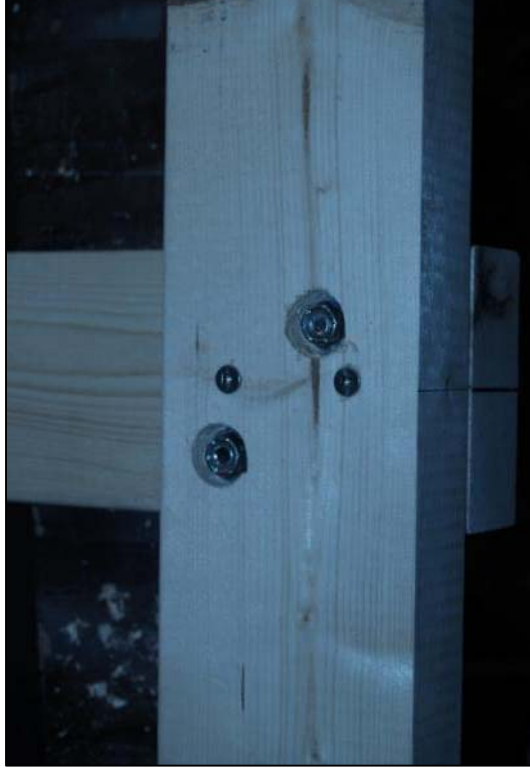
Rear Axle Bottom – Find and mark centers. The axle and frame just be square



Rear Axle – Use screws to hold in place while pilot and countersink holes are drilled



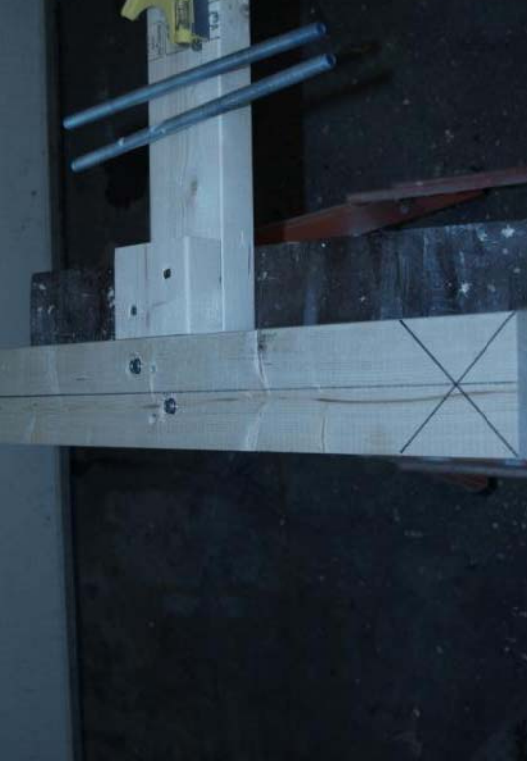
Rear Axle – Bolt holes completed, countersink must be large enough for socket



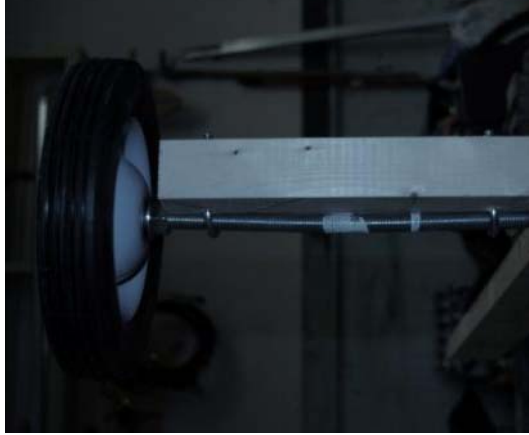
Rear Axle Bottom – Bolted to Frame



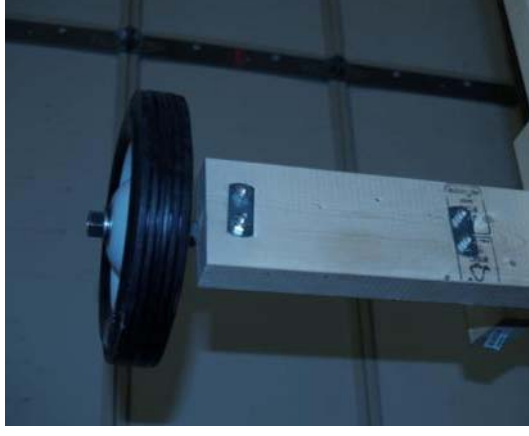
Rear Axle Bottom – Alignment block (optional) enables axle to remain square if it should be removed and re-attached (Transport)



Rear Axle Bottom – Find and mark center of axle to align placement of threaded rods



Rear Axle – Small U-Bolts are used to attach rod to axle a nut spaces the wheel from the wood. U-Bolts are approx 1 inch from either end of rod



Rear Axle Top – Ubolts holding rod to axle



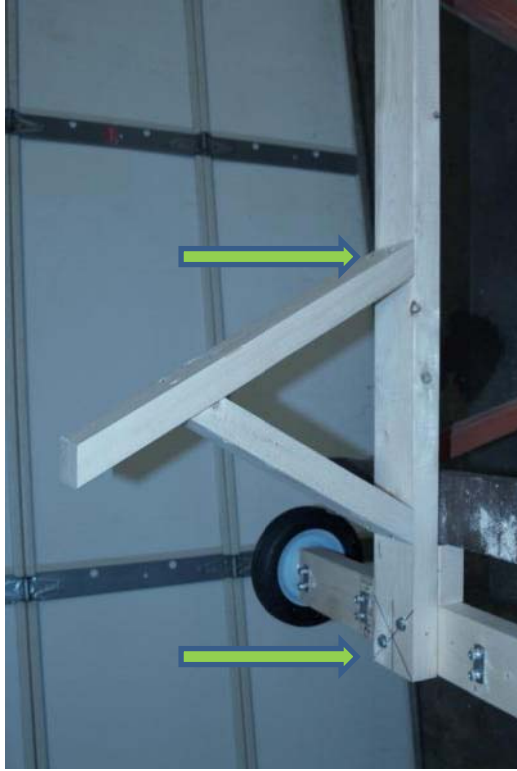
Rear Axle Top – Showing U-Bolts and axle bolted to frame. U-bolt nuts where replaced with Nyloc nuts, supplied nuts screwed on top to cover threads.



Rear Axle - Shows Wheels fixed with Nyloc nut, two nuts on u-bolts can be seen in background. Axle is 1/2 inch rod.



Seat Back – Brace and support pieces have been cut (30 deg angles)



Seat Back and support brace installed. 21 in from rear of fram to front of seat back support



Seat Post and Brace – Side panel installed



Seat Back installed



Seat Post and Brace – Side panel installed



Seat Post and Brace – Both side panels installed



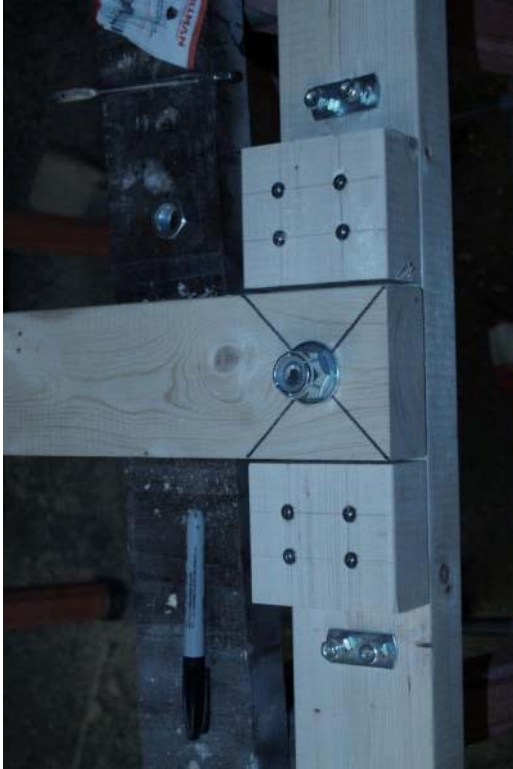
Front Axle -- Centers marked on axle and frame



Front Axle -- Holes drilled for center pivot bolt and threaded rod u-bolts



Washers between frame and axle



Front Axle -- Threaded rod installed same as rear axle Steering Limiter blocks installed



Brake – Shape drawn on block, cut and sand to final shape, wrap with bicycle tire, upside down rubber backed carpet strip, or other material to act as brake pad



Bottom view – Foot rest



Seat Bottom installed, brake installed, block and foot rest installed. Place foot rest far enough from front axle that steering is not impacted. Adjust brake location as necessary to ensure all scouts can reach while wearing shoulder belt.



Seatbelt Hardware – Extra nuts are needed. Thread one set of nuts completely onto u-bolt, then the plate. This will keep the bolt from pulling through the seat.



Seatbelt Hardware installed – Top View



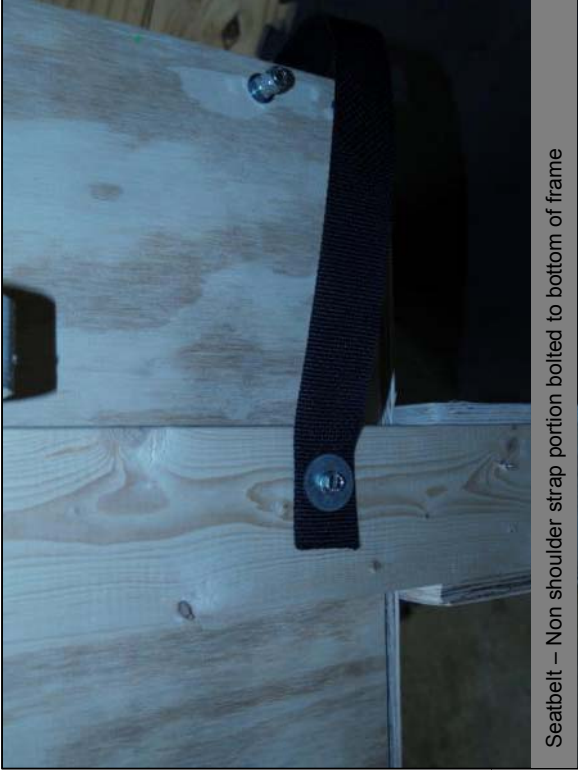
Seatbelt Hardware – Installed, bottom view, double nuts eliminate exposed threads



Seatbelt – Webbing bolted to seat back, length depends on scout size, this piece will go over the shoulder, through the u-bolt and over the waist.



Seatbelt – Shoulder and lap portion. Shorter piece attaches to bottom of frame and runs through the remaining u-bolt



Seatbelt – Non shoulder strap portion bolted to bottom of frame



Seatbelt - Fully installed